

RAYMOND

2255 76th Street | Franksville, WI 53126-9539 | Phone: (262) 835-4426 | Fax: (262) 835-4449 | Website: raymondtownof.com

RESOLUTION NO. 18-11-26A

**TOWN OF RAYMOND, RACINE COUNTY, WISCONSIN
A RESOLUTION TO INITIATE PROCEDURE
FOR INCORPORATING THE TOWN OF RAYMOND AS A VILLAGE
BY PROVIDING FOR A REFERENDUM ON APRIL 2, 2019**

**THE TOWN BOARD OF THE TOWN OF RAYMOND, RACINE COUNTY, WISCONSIN,
RESOLVES AS FOLLOWS:**

WHEREAS, the Town Board wishes to initiate the procedure for incorporation of the Town of Raymond as the Village of Raymond; and

WHEREAS, the Town Board has verified that the Town of Raymond meets the requirements for incorporation as a Village pursuant to Wis. Stat. §66.0203(10), because it is adjacent to the Village of Mount Pleasant which, effective January 1, 2018, contains an electronics and information technology manufacturing zone designated under Wis. Stat. §238.396(1m); and

WHEREAS, the Town Board of Raymond ("Town Board"), wishes to allow the electors of the Town of Raymond the opportunity to determine whether the Town of Raymond should incorporate and become the Village of Raymond, as provided by Wis. Stat. §66.0203(10); and

NOW, THEREFORE, BE IT RESOLVED,

1. The Town Board hereby confirms and supplements the procedure for incorporating the Town of Raymond as the Village of Raymond pursuant to Wis. Stat. § 66.0203(10), by adopting this Resolution providing for a referendum on the question of whether the Town of Raymond should become a Village.
2. A referendum election shall be held on Tuesday, April 2, 2019, pursuant to Wis. Stat. §66.0211(3) and Wis. Stat. §66.0217(7), to the extent applicable. The ballot question on the referendum shall contain the words "For a Village;" and "Against a Village."
3. The territory which is proposed to be incorporated includes all of the territory located within the boundaries of the Town of Raymond as it exists as of the date of the referendum election on April 2, 2019. A map of the territory proposed to be incorporated is attached at **Exhibit A** to this Resolution.
4. The Town Clerk for the Town of Raymond is directed to take such actions as are necessary to implement this Resolution and schedule the referendum election.
5. The Town Clerk is further directed to post this Resolution on the Town of Raymond's website and to publish the Resolution as a Class 1 notice pursuant to the provisions of Chapter 985 of the Wisconsin Statutes.

The above Resolution was duly adopted at a meeting of the Town Board of the Town of Raymond on the 26 day of Nov, 2018.

Gary Kastenson
Chairman Gary Kastenson

Paul Ryan
Supervisor Paul Ryan

Dave Lecus
Supervisor Dave Lecus

Doug Schwartz
Supervisor Doug Schwartz

Tim Gezvain
Supervisor Tim Gezvain

Linda M. Terry
Town Clerk Linda M. Terry



CREATIVITY BEYOND ENGINEERING

R.A. Smith, Inc.

16745 W. Bluemound Road

Brookfield, WI 53005-5938

(262) 781-1000 | rasmith.com

CORPORATE LIMITS
VILLAGE OF RAYMOND, RACINE COUNTY

All of Sections 1 through 36, Town 4 North, Range 21 East, Village of Raymond, Racine County, Wisconsin Bounded and described as follows:

Beginning at the Northeast corner of said Section 1; thence South 00° 20' 02" East along the East line of Section 1 a distance of 2436.62 feet to a point; thence South 00° 06' 21" East along the East line of Section 1 a distance of 2627.55 feet to a point; thence South 00° 52' 08" East along the East line of Section 12 a distance of 2661.93 feet to a point; thence South 00° 45' 46" East along the East line of Section 12 a distance of 2655.10 feet to a point; thence South 00° 33' 09" East along the East line of Section 13 a distance of 2651.18 feet to a point; thence South 00° 13' 08" East along the East line of Section 13 a distance of 2651.78 feet to a point; thence South 00° 16' 26" East along the East line of Section 24 a distance of 2651.22 feet to a point; thence South 00° 32' 36" East along the East line of Section 24 a distance of 2650.17 feet to a point; thence South 00° 37' 26" East along the East line of Section 25 a distance of 2656.21 feet to a point; thence South 00° 43' 30" East along the East line of Section 25 a distance of 2635.37 feet to a point; thence South 00° 33' 50" East along the East line of Section 36 a distance of 2640.61 feet to a point; thence South 00° 35' 59" East along the East line of Section 36 a distance of 2625.82 feet to a point; thence South 88° 53' 58" West along the South line of Section 36 a distance of 2646.85 feet to a point; thence South 88° 54' 04" West along the South line of Section 36 a distance of 2646.98 feet to a point; thence South 88° 50' 44" West along the South line of Section 35 a distance of 2638.61 feet to a point; thence South 88° 59' 16" West along the South line of Section 35 a distance of 2647.33 feet to a point; thence South 88° 54' 45" West along the South line of Section 34 a distance of 2639.34 feet to a point; thence South 88° 54' 44" West along the South line of Section 34 a distance of 2639.45 feet to a point; thence South 88° 29' 28" West along the South line of Section 33 a distance of 2636.21 feet to a point; thence South 88° 49' 01" West along the South line of Section 33 a distance of 2645.71 feet to a point; thence South 88° 25' 43" West along the South line of Section 32 a distance of 2643.03 feet to a point; thence South 88° 22' 45" West along the South line of Section 32 a distance of 2642.37 feet to a point; thence South 88° 29' 25" West along the South line of Section 31 a distance of 33.00 feet to a point; thence South 88° 29' 25" West along the South line of Section 31 a distance of 2603.51 feet to a point; thence South 88° 29' 25" West along the South line of Section 31 a distance of 28.50 feet to a point; thence South 88° 29' 25" West along the South line of Section 31 a distance of 2588.23 feet to a point; thence North 00° 30' 08" West along the West line of Section 31 a distance of 2611.22 feet to a point; thence North 00° 32' 38" West along the West line of Section 31 a distance of 2635.02 feet to a point; thence North 00° 25' 40" West along the West line of Section 30 a distance of 2618.12 feet to a point; thence North 00° 33' 57" West along the West line of Section 30 a distance of 2638.16 feet to a point; thence North 00° 27' 22" West along the West line of Section 19 a distance of 2642.66 feet to a point; thence North 00° 26' 24" West along the West line of Section 19 a distance of 2636.06 feet to a point; thence North 00° 28' 41" West along the West line of Section 18 a distance of 2633.37 feet to a point; thence North 00° 25' 15" West along the West line of Section 18 a distance of 2635.30 feet to a point; thence North 00° 38' 09" West along the West line of Section 7 a distance of 2635.45 feet to a point; thence North 00° 20' 56" West along the West line of Section 7 a distance of 2631.74 feet to a point; thence North 00° 28' 15" West along the West line of Section 6 a distance of 2607.57 feet to a point; thence North 00°



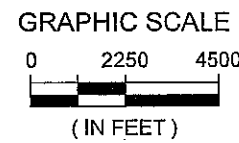
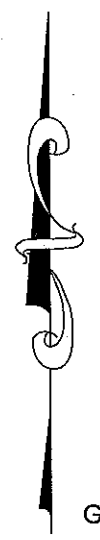
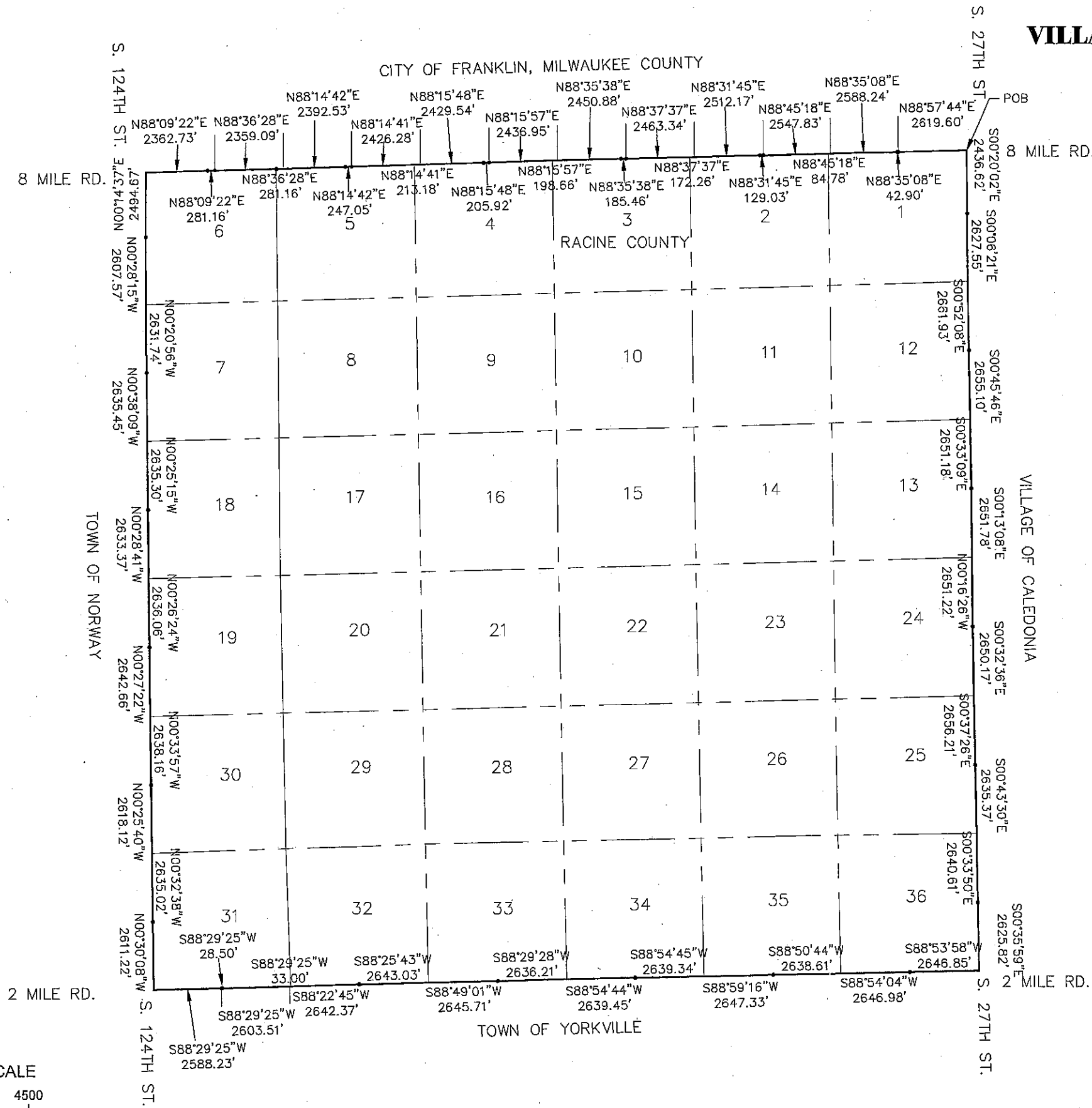
14' 37" East along the West line of Section 6 a distance of 2494.67 feet to a point; thence North 88° 09' 22" East along the North line of Section 6 a distance of 2362.73 feet to a point; thence North 88° 09' 22" East along the North line of Section 6 a distance of 281.16 feet to a point; thence North 88° 36' 28" East along the North line of Section 6 a distance of 2359.09 feet to a point; thence North 88° 36' 28" East along the North line of Section 5 a distance of 281.16 feet to a point; thence North 88° 14' 42" East along the North line of Section 5 a distance of 2392.53 feet to a point; thence North 88° 14' 42" East along the North line of Section 5 a distance of 247.05 feet to a point; thence North 88° 14' 41" East along the North line of Section 5 a distance of 2426.28 feet to a point; thence North 88° 14' 41" East along the North line of Section 4 a distance of 213.18 feet to a point; thence North 88° 15' 48" East along the North line of Section 4 a distance of 2429.54 feet to a point; thence North 88° 15' 48" East along the North line of Section 4 a distance of 205.92 feet to a point; thence North 88° 15' 57" East along the North line of Section 4 a distance of 2436.95 feet to a point; thence North 88° 15' 57" East along the North line of Section 3 a distance of 198.66 feet to a point; thence North 88° 35' 38" East along the North line of Section 3 a distance of 2450.88 feet to a point; thence North 88° 35' 38" East along the North line of Section 3 a distance of 185.46 feet to a point; thence North 88° 37' 37" East along the North line of Section 3 a distance of 2463.34 feet to a point; thence North 88° 37' 37" East along the North line of Section 2 a distance of 172.26 feet to a point; thence North 88° 31' 45" East along the North line of Section 2 a distance of 2512.17 feet to a point; thence North 88° 31' 45" East along the North line of Section 2 a distance of 129.03 feet to a point; thence North 88° 45' 18" East along the North line of Section 2 a distance of 2547.83 feet to a point; thence North 88° 45' 18" East along the North line of Section 1 a distance of 84.78 feet to a point; thence North 88° 35' 08" East along the North line of Section 1 a distance of 2588.24 feet to a point; thence North 88° 35' 08" East along the North line of Section 1 a distance of 42.90 feet to a point; thence North 88° 57' 44" East along the North line of Section 1 a distance of 2619.60 feet to the point of beginning. Containing 22,879 Acres, more or less.

Prepared by: John P. Casucci, PLS
Date: November 19, 2018
Project No.: 167742 / 1181000

CORPORATE LIMITS

VILLAGE OF RAYMOND, RACINE COUNTY, WISCONSIN

Township 4 North, Range 21 East



PROJ NO. 167742
NOVEMBER 20, 2018

raSmith
CREATIVITY BEYOND ENGINEERING

16745 W. Bluemound Road
Brookfield, WI 53005-5938
(262) 781-1000
rasmith.com